

Marie Skłodowska-Curie Postdoctoral Fellowships

Kristin Kraav

Agenda

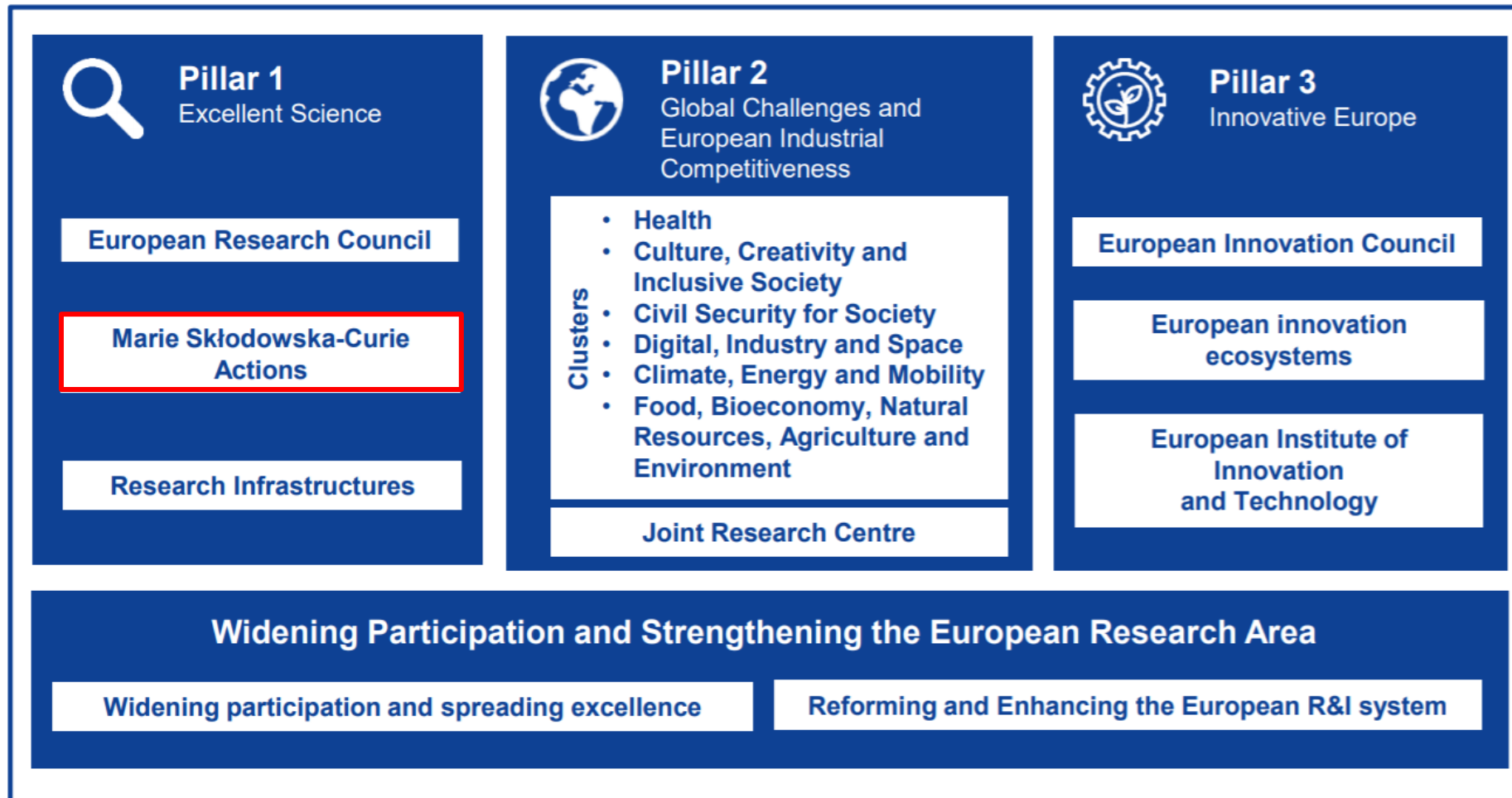
14:00-14:55 Postdoctoral fellowships: rules,
funding, application

14:55-15:00 **BREAK**

15:00-15:30 Sharing experience:
Dr. Liisa Loog

15:30-16:00 Postdoctoral fellowships:
evaluation, statistics

Horizon Europe



MSCA key features

- **Support the training and career development** of researchers from **all over the world** through excellent doctorates, postdoctoral fellowships and collaborative projects
- Stimulating **international, inter-sectoral and interdisciplinary** cooperation. Participation of **non-academic sector**, especially industry and SMEs
- For researchers at **every stage** of their career
- Support excellent research in all domains (**bottom-up approach**)
- Promotion of **attractive working and employment** conditions (financing rate of up to 100% based on **unit costs**)
- Impacting **researcher careers, organisations, structures**



Researchers' training, skills and career development (all stages of career)



Excellent research in all domains (bottom-up approach)



International, cross-sectoral & interdisciplinary mobility



Attractive working and employment conditions



Structuring impact on organisations through excellent programmes



Strong collaboration with industry and SMEs

MSCA Actions

1. MSCA Doctoral Networks	→ <i>networks training doctoral candidates</i>
2. MSCA Postdoctoral Fellowships	→ <i>postdoctoral researchers</i>
3. MSCA Staff Exchanges	→ <i>any type of research(-related) staff</i>
4. MSCA COFUND	→ <i>co-funding training programmes</i>
5. MSCA and Citizens	→ <i>public outreach events</i>

Aims of the MSCA postdoctoral fellowships

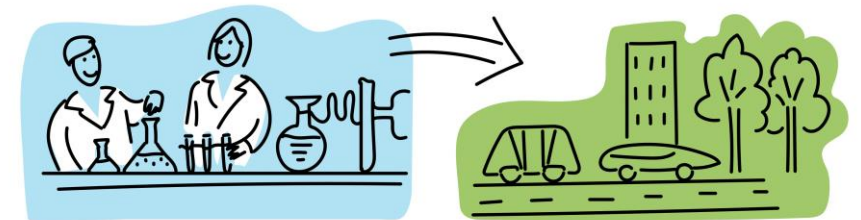
- Foster excellence through the implementation of a research project in any research field
- Enhance the creative and innovative potential of researchers holding a PhD (training on transferable skills & career development)
- Focus on i3(international, inter-sectoral, interdisciplinary) mobility
- Bridges with and exposure to the non-academic sector



MSCA postdoctoral fellowships support

Postdoctoral fellowships include:

- Carrying out a research project
- Skills development (both scientific and transferable)
- Dissemination of research results and communication activities targeted at general population
- Developing connections with the non-academic sector
- Physical mobility to another country



Types of the MSCA postdoctoral fellowships

European Fellowships:

- For coming to Europe* from any country in the world or moving within Europe
- Duration 12-24 months

Global Fellowships:

- For going outside EU Member States and Horizon Europe AC
- Duration 24-36 months (12-24 outgoing phase & 12 months mandatory return phase in Europe)

Optional **secondments** worldwide up to 1/3 of the fellowship duration (or outgoing phase of GF)

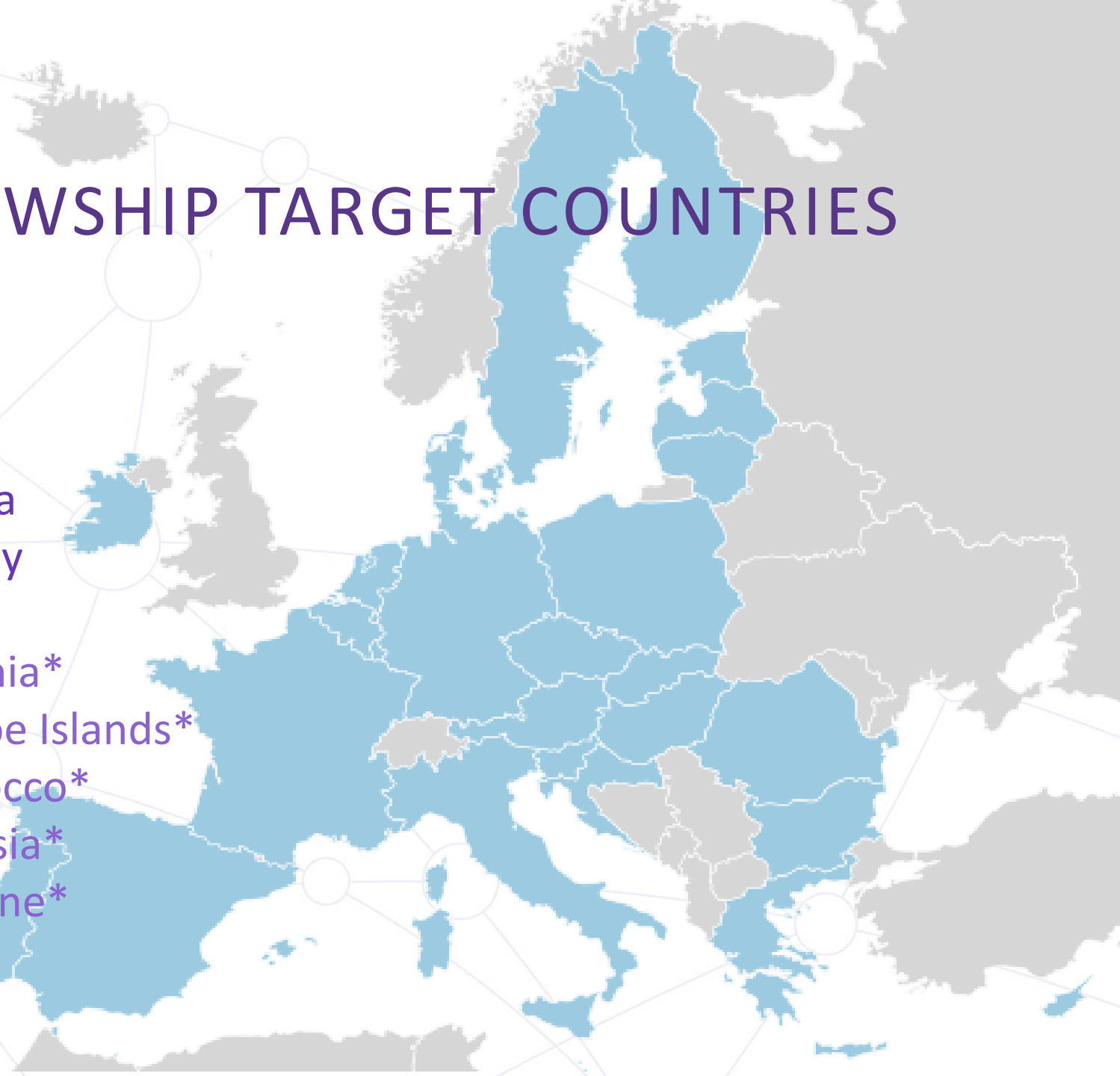
Optional additional **placement** of **up to 6 months in a non-academic** European organization at the end of the regular duration of the Fellowship

EUROPEAN FELLOWSHIP TARGET COUNTRIES

EU 27

+ Associated countries*:

- Armenia
- Bosnia-Herzegovina
- Georgia
- Iceland
- Israel
- Kosovo
- Moldova
- Montenegro
- North Macedonia
- Norway
- Serbia
- Turkey
- Albania*
- Faeroe Islands*
- Morocco*
- Tunisia*
- Ukraine*
- UK*?



MSCA postdoctoral fellowships Funding

Contributions for recruited researchers Per person-month					Institutional unit contributions Per person-month	
Living allowance	Mobility allowance	Family allowance (if applicable)	Long-term leave allowance (if applicable)	Special needs allowance (if applicable)	Research, training and networking contribution	Management and indirect contribution
EUR 5 080	EUR 600	EUR 660	EUR 5 680 x % covered by the beneficiary	Requested unit ¹ x (1/number of months)	EUR 1 000	EUR 650

- Country coefficient will apply to the Living allowance
- for example in case of Estonia: **80,3 %**

Applicants of MSCA postdoctoral fellowships

The proposal is submitted by the researcher in cooperation with the European Host **organisation** (*beneficiary*):

- There are no limitations to organisation type, but it must provide supervision and conditions for carrying out the research project
- In case of Global Fellowships, the Host organisation located outside Europe is an *associated partner* in the project and must submit a letter of commitment with the project

Researcher:

- Can be of **any nationality** (Global Fellowships: nationals or long term residents of MS or HE AC)
- in possession of **PhD** at the call deadline
- **up to 8 years** research experience after PhD (with exceptions: career breaks, work outside research, research outside Europe for reintegrating researchers,...)
- **mobility rule:** not resided / had main activity in the country of the beneficiary (or host organization for GF) more than 12 months in the 36 months before call deadline

Evaluation criteria

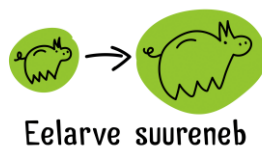
Excellence	Impact	Quality and efficiency of the implementation
<p>Quality and pertinence of the project's research and innovation objectives (and the extent to which they are ambitious, and go beyond the state of the art)</p>	<p>Credibility of the measures to enhance the career perspectives and employability of the researcher and contribution to his/her skills development</p>	<p>Quality and effectiveness of the work plan, assessment of risks and appropriateness of the effort assigned to work packages</p>
<p>Soundness of the proposed methodology (including interdisciplinary approaches, consideration of the gender dimension and other diversity aspects if relevant for the research project, and the quality of open science practices)</p>	<p>Suitability and quality of the measures to maximise expected outcomes and impacts, as set out in the dissemination and exploitation plan, including communication activities</p>	<p>Quality and capacity of the host institutions and participating organisations, including hosting arrangements</p>
<p>Quality of the supervision, training and of the two-way transfer of knowledge between the researcher and the host</p>	<p>The magnitude and importance of the project's contribution to the expected scientific, societal and economic impacts</p>	
<p>Quality and appropriateness of the researcher's professional experience, competences and skills</p>		
<p>50%</p>	<p>30%</p>	<p>20%</p>

Applying for MSCA postdoctoral fellowships

- Call for proposals opened on 12 May; deadline for submitting proposals is on **14 September 2022**

- Budget of the call:

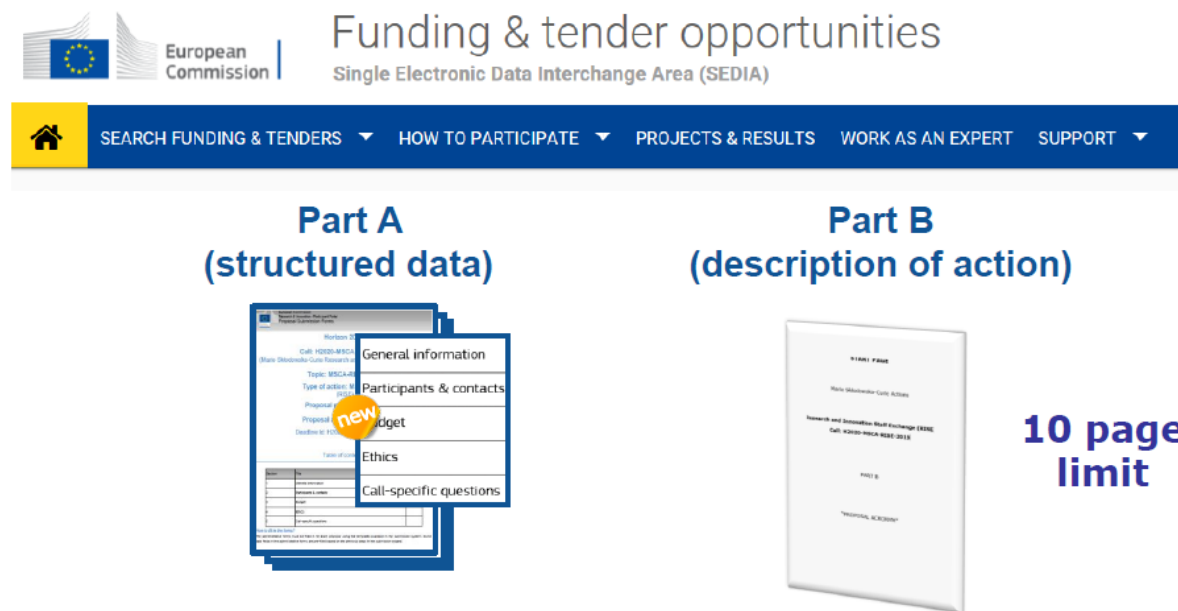
- EF 218.45 M€
- GF 38.55 M€



Eelarve suureneb

- Application via the Funding and Tenders portal:

<https://ec.europa.eu/info/funding-tenders/opportunities/portal/screen/opportunities/topic-details/horizon-msca-2022-pf-01-01>

The image shows a screenshot of the European Commission's 'Funding & tender opportunities' portal. At the top, there is the European Commission logo and the text 'Funding & tender opportunities Single Electronic Data Interchange Area (SEDIA)'. Below this is a navigation bar with a home icon and several menu items: 'SEARCH FUNDING & TENDERS', 'HOW TO PARTICIPATE', 'PROJECTS & RESULTS', 'WORK AS AN EXPERT', and 'SUPPORT'. The main content area is divided into two sections: 'Part A (structured data)' and 'Part B (description of action)'. Under 'Part A', there is a stack of documents representing a form with fields for 'General information', 'Participants & contacts', 'Budget', 'Ethics', and 'Call-specific questions'. A 'new' badge is visible on the 'Budget' field. Under 'Part B', there is a 3D rendering of a document titled 'PART B' with a '10 page limit' label next to it.

Proposal for MSCA postdoctoral fellowships

Part A administrative forms are filled on-line:

- General information
 - Title, scientific area, keywords, abstract, declarations
- Information on participants
 - Beneficiary, supervisor, researcher
- Budget (is generated automatically)
- Ethics and Security
- Other questions

Part B of the proposal consists of two PDF documents:

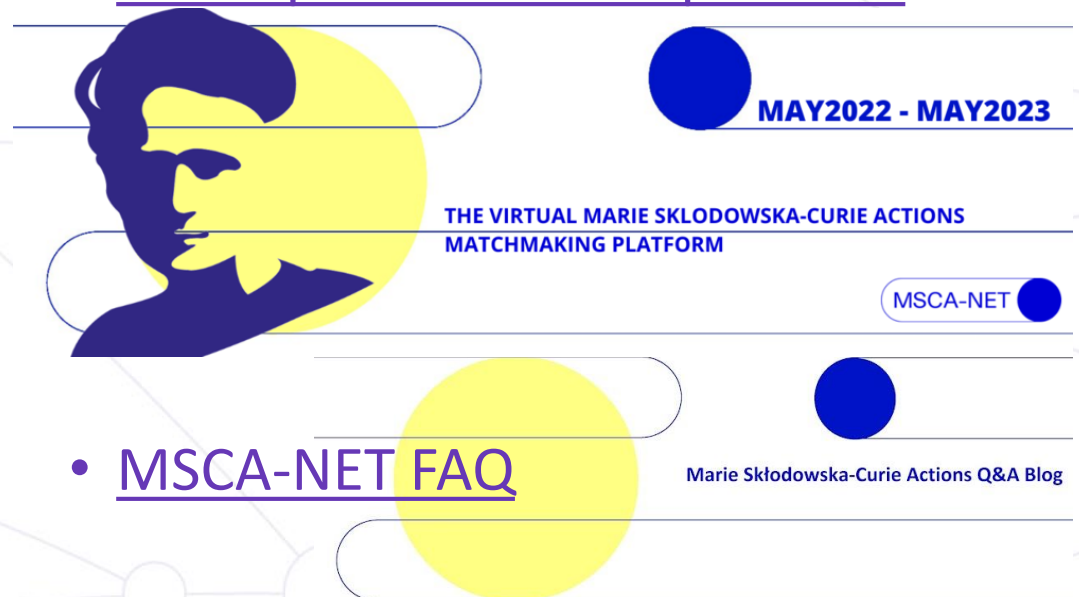
- *Document 1 – max 10 pages*
 1. EXCELLENCE: research, training, supervision, researcher
 2. IMPACT: impact on career; scientific, economic, societal impact; dissemination and communication
 3. IMPLEMENTATION: work plan, infrastructures
- *Document 2 – no overall page limit*
 4. CV OF THE RESEARCHER: max 5 p
 5. CAPACITIES OF THE PARTICIPATING ORGANISATIONS: max 1 p for beneficiary and max ½ p for associated partner
 6. ADDITIONAL ETHICS INFORMATION
 7. ADDITIONAL INFORMATION ON SECURITY SCREENING
 8. LETTERS OF COMMITMENT OF ASSOCIATED PARTNERS (GF + PLACEMENT): *only for Global Fellowship and placement*

Useful materials

- Official documents (in the F&T portal):
 - [Work Programme](#)
 - [Proposal template with explanations](#)
 - FAQ for the 2022 PF call
 - [Model Grant Agreement](#)
 - [HE programme guide](#)
- Official documents on [REA website](#):
 - [Guide for Applicants](#) for the 2022 PF call
 - Instructions how to calculate the 8 years from PhD

- Materials elsewhere:

- [MSCA partner search platform](#)



The screenshot shows a search interface for the MSCA partner search platform. On the left is a profile picture of a man. To the right, there are several search filters and results. A blue circle indicates the period 'MAY2022 - MAY2023'. Below that, the text reads 'THE VIRTUAL MARIE SKŁODOWSKA-CURIE ACTIONS MATCHMAKING PLATFORM'. Another blue circle contains the text 'MSCA-NET'. At the bottom, a yellow circle highlights the text 'Marie Skłodowska-Curie Actions Q&A Blog'. The text 'MSCA-NET FAQ' is also visible in the bottom right area.

- [MSCA-NET FAQ](#)

ERA Fellowships

- **Aim:** to combat brain drain and support researchers to undertake their fellowship in a **Widening country** (including Estonia)
- All **non-funded European Fellowship** applications that pass all evaluation thresholds (70%) will be automatically passed on to the ERA Fellowships call (*NB! no applications can be submitted directly to this call*) funded from the Widening participation part of Horizon Europe ([HORIZON-WIDERA-2022-TALENTS-04](#))
- A single multidisciplinary ranking list will be formed; ca. 35 top-ranking proposals will be funded
- Conditions of the MSCA PF will apply (same funding, same Grant Agreement)
- **Budget:** 8 M€ in 2022

Success rates

		2014	2015	2016	2017	2018	2019	2020	2021
European Fellowships									
	Standard	18,62%	14,20%	13,10%	14,56%	12,40%	13,08%	12,35%	13,83%
	Career Restart	18,23%	13,81%	12,80%	14,3%	17,97%	20,14%	18,83%	N/A
	Reintegration	18,96%	14,57%	13,40%	14,6%	19,39%	20,37%	19,24%	N/A
	Society & Enterprise			36,40%	28,4%	15,29%	27,55%	23,48%	N/A
Global Fellowships		11,27%	11,27%	13,10%	15,80%	21,68%	24,64%	23,29%	16,80%

2021 PF cut-off scores

MSCA-PF-2021: Cumulative percentage of proposals above threshold, with a given score or higher (funding range marked in green)																
Number of eligible proposals	1062 proposals	123 proposals	1052 proposals	896 proposals	1672 proposals	163 proposals	847 proposals	1624 proposals	65 proposals	9 proposals	70 proposals	119 proposals	119 proposals	13 proposals	69 proposals	344 proposals
Cut off score for funding*	92,8	92,0	92,8	93,6	94,4	92,4	92,2	93,6	92,0	83,8	95,0	95,8	95,8	92,0	94,2	92,8
Score equal to or above	EF-CHE	EF-ECO	EF-ENG	EF-ENV	EF-LIF	EF-MAT	EF-PHY	EF-SOC	GF-CHE	GF-ECO	GF-ENG	GF-ENV	GF-LIF	GF-MAT	GF-PHY	GF-SOC
100	0,38%	0,00%	1,05%	0,56%	0,66%	1,84%	0,12%	0,92%	1,54%	0,00%	1,43%	0,84%	0,00%	0,00%	0,00%	0,58%
99	1,41%	0,00%	1,43%	1,34%	1,50%	3,68%	0,71%	1,91%	1,54%	0,00%	2,86%	3,36%	2,52%	0,00%	1,45%	2,03%
98	3,39%	0,81%	3,23%	3,01%	3,95%	4,29%	2,01%	3,68%	1,54%	0,00%	8,57%	7,56%	5,04%	7,69%	1,45%	4,36%
97	5,08%	3,25%	4,75%	5,47%	6,22%	7,36%	2,72%	5,79%	3,08%	0,00%	10,00%	9,24%	10,08%	7,69%	2,90%	6,40%
96	7,53%	6,50%	6,75%	7,25%	9,15%	8,59%	4,13%	8,25%	6,15%	0,00%	14,29%	14,29%	15,13%	7,69%	2,90%	9,30%
95	9,23%	6,50%	9,32%	9,82%	11,96%	9,20%	6,73%	10,65%	6,15%	0,00%	15,71%	21,85%	18,49%	7,69%	7,25%	11,34%
94	11,02%	8,13%	11,60%	12,61%	15,31%	9,82%	9,21%	12,87%	7,69%	0,00%	18,57%	25,21%	21,85%	7,69%	17,39%	13,95%
93	13,65%	10,57%	13,50%	16,07%	19,08%	12,88%	11,92%	15,83%	13,85%	0,00%	24,29%	27,73%	26,89%	7,69%	23,19%	15,99%
92	16,10%	15,45%	15,68%	19,98%	22,13%	15,34%	14,76%	18,90%	16,92%	11,11%	30,00%	31,93%	31,09%	15,38%	27,54%	17,44%
91	18,83%	16,26%	18,54%	23,44%	24,58%	17,79%	18,06%	21,80%	24,62%	11,11%	32,86%	33,61%	32,77%	15,38%	36,23%	21,22%
90	20,90%	16,26%	20,44%	27,34%	27,63%	22,70%	21,61%	23,95%	30,77%	11,11%	37,14%	36,13%	35,29%	15,38%	43,48%	22,67%
89	23,73%	17,89%	22,43%	29,91%	31,04%	28,22%	25,62%	26,29%	33,85%	11,11%	38,57%	39,50%	39,50%	15,38%	46,38%	25,87%
88	26,18%	18,70%	24,81%	32,48%	33,79%	29,45%	29,16%	28,45%	36,92%	11,11%	40,00%	42,86%	43,70%	23,08%	50,72%	29,07%
87	28,15%	23,58%	27,47%	35,94%	36,78%	32,52%	32,35%	30,85%	38,46%	11,11%	41,43%	46,22%	44,54%	30,77%	50,72%	31,10%
86	31,73%	25,20%	30,42%	39,17%	39,29%	36,20%	34,12%	32,82%	40,00%	11,11%	45,71%	51,26%	45,38%	38,46%	52,17%	32,56%
85	34,46%	27,64%	32,70%	41,52%	41,93%	38,65%	38,72%	34,85%	44,62%	11,11%	48,57%	53,78%	47,90%	53,85%	60,87%	35,76%
84	37,29%	31,71%	34,89%	44,08%	45,16%	42,94%	42,15%	37,32%	50,77%	11,11%	51,43%	57,98%	49,58%	53,85%	62,32%	37,21%
83	40,30%	33,33%	36,88%	45,76%	47,73%	45,40%	45,57%	39,66%	52,31%	22,22%	55,71%	60,50%	52,94%	53,85%	66,67%	40,12%
82	44,16%	36,59%	39,26%	49,55%	50,30%	47,85%	49,23%	42,36%	56,92%	22,22%	57,14%	64,71%	54,62%	61,54%	66,67%	43,60%
81	46,89%	39,84%	42,21%	53,46%	53,23%	53,99%	52,54%	45,38%	60,00%	22,22%	57,14%	66,39%	62,18%	61,54%	68,12%	46,80%
80	49,62%	44,72%	43,82%	56,81%	55,68%	55,21%	55,73%	47,17%	60,00%	33,33%	58,57%	68,91%	68,07%	61,54%	72,46%	49,13%
79	52,92%	47,15%	47,15%	58,26%	58,37%	59,51%	58,80%	49,88%	60,00%	44,44%	62,86%	70,59%	69,75%	61,54%	73,91%	50,87%
78	56,03%	49,59%	48,95%	60,83%	61,18%	61,96%	61,39%	52,22%	60,00%	55,56%	64,29%	73,11%	70,59%	76,92%	75,36%	53,20%
77	59,23%	52,03%	50,86%	62,72%	64,35%	66,26%	64,58%	54,68%	63,08%	55,56%	67,14%	77,31%	73,95%	76,92%	79,71%	55,52%
76	62,24%	54,47%	52,95%	64,73%	67,17%	67,48%	66,71%	56,65%	64,62%	55,56%	71,43%	79,83%	75,63%	76,92%	81,16%	57,56%
75	63,75%	56,10%	55,13%	66,74%	69,20%	71,78%	68,71%	59,11%	64,62%	55,56%	72,86%	80,67%	76,47%	84,62%	82,61%	59,59%
74	65,82%	59,35%	57,32%	67,86%	70,93%	73,01%	70,96%	60,78%	69,23%	55,56%	74,29%	82,35%	77,31%	84,62%	82,61%	61,34%
73	67,89%	61,79%	59,41%	69,08%	72,19%	74,23%	73,67%	62,68%	70,77%	55,56%	78,57%	83,19%	79,83%	84,62%	84,06%	63,08%
72	69,77%	62,60%	61,69%	70,76%	73,86%	76,07%	75,80%	64,22%	72,31%	66,67%	80,00%	83,19%	81,51%	84,62%	86,96%	65,70%
71	71,94%	65,85%	63,78%	72,21%	75,42%	77,91%	77,69%	65,52%	75,38%	66,67%	81,43%	84,87%	84,03%	84,62%	88,41%	66,28%
70	74,11%	68,29%	65,40%	74,44%	77,27%	79,75%	79,46%	67,67%	76,92%	66,67%	82,86%	87,39%	85,71%	84,62%	88,41%	69,77%
Percentage of proposals below threshold (<70)	25,89%	31,71%	34,60%	25,56%	22,73%	20,25%	20,54%	32,33%	23,08%	33,33%	17,14%	12,61%	14,29%	15,38%	11,59%	30,23%

ETAG NCP support during proposal preparation

- **Info days** – in May
- **Series of webinars** – in May and June
- **Questions, consultation** – any time before the deadline:
kristin.kraav@etag.ee; 501 3482; skype:kristinkraav
- **Pre-screening of the proposal** – (sufficiently early) before the
call deadline: kristin.kraav@etag.ee

Series of webinars in 2022

1. Wednesday, **18 May**, at 15-17:
Structure of the MSCA PF application. Ethics, Open science, gender aspects in research. CV.
2. Thursday, **19 May**, at 15-17:
“Excellence” chapter of the MSCA PF application.
3. Thursday, **26 May**, at 15-17:
“Impact” chapter of the MSCA PF application.
4. Friday, **27 May**, at 15-17:
“Implementation” chapter of the MSCA PF application.
5. Wednesday, **1 June**, at 14-16:
Evaluators’ view on MSCA PF applications. Evaluators of MSCA PF proposals share their experience.